

# Xiamen Sino Star Machinery Co., Ltd

[www.ChinaStoneSaw.com](http://www.ChinaStoneSaw.com)

E-mail: [Sales@ChinaStoneSaw.com](mailto:Sales@ChinaStoneSaw.com)

C417,NO. 12,East Haijing Road,Haicang Dist,Xiamen,China

## Bridge Polishing Machine (Three Heads)



Item No.	MCQSM-3
Power of main motor	7.5KW
Max Polishing length (single trip & double trip)	3200mm & 6400mm
Max polishing width	2000mm
Min polishing thickness	10mm
Heads up and down	150mm
Side beam length	4600mm
Cross beam length	8300mm
Water consumption	8 m <sup>3</sup> /hour
Machine weight	5000kg
<b>Machine Working Video:</b> <a href="https://youtu.be/go-1ODx9gA8">https://youtu.be/go-1ODx9gA8</a>	

# Xiamen Sino Star Machinery Co., Ltd

[www.ChinaStoneSaw.com](http://www.ChinaStoneSaw.com)

E-mail: [Sales@ChinaStoneSaw.com](mailto:Sales@ChinaStoneSaw.com)

C417,NO. 12,East Haijing Road,Haicang Dist,Xiamen,China

## MCDH-4 Calibration Machine



Item Name	Unit	Value
Max Working Length	cm	1400
Max Working Width	cm	1250
Max Working Thickness	cm	10-40
Working Speed	M/min	0.5-2
Total Power	KW	78
Water Consumption	Cbm/h	8
Machine Weight	T	8.5
Overall Dimension	L*W*H	7000*1880*2200MM
<b>Machine Video</b>	<b><a href="https://youtu.be/uNAht-QtIO8">https://youtu.be/uNAht-QtIO8</a></b>	

# Xiamen Sino Star Machinery Co., Ltd

[www.ChinaStoneSaw.com](http://www.ChinaStoneSaw.com)

E-mail: [Sales@ChinaStoneSaw.com](mailto:Sales@ChinaStoneSaw.com)

C417,NO. 12,East Haijing Road,Haicang Dist,Xiamen,China

## Stone Bush Hammer Machine



Item Name	Value
Grinding head speed	940 (RPM)
Power of main motor	2.2 kw
Traveling motor	0.75kw
Max Processing size	L*W=2800 x1000 (mm)
Processing efficiency	15-20 sqm/h
Machine weight	500kg
Machine overall size	L*W*H=3275 x1700x1350
<b>Machine Working Video</b>	<b><a href="https://youtu.be/xwB_hQXZwYk">https://youtu.be/xwB_hQXZwYk</a></b>

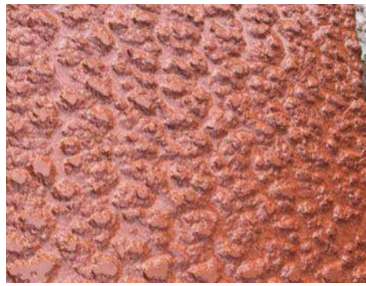
# Xiamen Sino Star Machinery Co., Ltd

[www.ChinaStoneSaw.com](http://www.ChinaStoneSaw.com)

E-mail: Sales@ChinaStoneSaw.com

C417,NO. 12,East Haijing Road,Haicang Dist,Xiamen,China

## Three in One Stone Bush Hammer Machine



Model No.	MC-B10
Heads	10pcs
Air consumption	3cube/min or 22kw
Main motor power	2.2kw
Overall size	3400*2000*1500mm
Max processing size	2500*1200mm
Weight	900kg
Capacity in 8 hours for Chop Axe	160-200 squire meter
Capacity in 8 hours for Pineapple	60-80 square meter

# Xiamen Sino Star Machinery Co., Ltd

[www.ChinaStoneSaw.com](http://www.ChinaStoneSaw.com)

E-mail: [Sales@ChinaStoneSaw.com](mailto:Sales@ChinaStoneSaw.com)

C417,NO. 12,East Haijing Road,Haicang Dist,Xiamen,China

## Stone Edge Grinding Polishing Machine



### Abnormal-figure polishing Machine:

#### YXMB-4000

Tum with runner & gear, high stples speed-changing, long life, turning speed of polishing hend, lom producing cost, different blades for internal & external line & chiffon, It is first choice for big & middle-sized stone proessing maching.

Processing Length	3200mm
Processing Width	1200mm
Walking Speed	3-6/min
Total Power	3.37kw
Total Weight	1.6T

Machine Working Video:

<https://youtu.be/pA9ChCL8aHI>

<https://youtu.be/ngvxtHgReCI>

<https://youtu.be/5GD6hPxUyF8>

# Xiamen Sino Star Machinery Co., Ltd

[www.ChinaStoneSaw.com](http://www.ChinaStoneSaw.com)

E-mail: [Sales@ChinaStoneSaw.com](mailto:Sales@ChinaStoneSaw.com)

C417,NO. 12,East Haijing Road,Haicang Dist,Xiamen,China

## Manual Stone Polishing Machine



name	unit	Upright Type
Lifting Range of Main Engine	mm	700
Lifting Range of Polishing of the Polishing Wheel	mm	100
Back-turning Radius of Polishing	mm	1700
Power Of Main Motor	KW	4.5/5.5
Power of Lifting Motor	KW	0.75
Size of the Machine	mm	3200*660*1830
Weight of the Machine	Kg	850
<b>Working Video</b>	<b><a href="https://youtu.be/ESn0NGbY9jY">https://youtu.be/ESn0NGbY9jY</a></b>	

# Xiamen Sino Star Machinery Co., Ltd

[www.ChinaStoneSaw.com](http://www.ChinaStoneSaw.com)

E-mail: [Sales@ChinaStoneSaw.com](mailto:Sales@ChinaStoneSaw.com)

C417,NO. 12,East Haijing Road,Haicang Dist,Xiamen,China

## MCQM-1C Bridge Polishing Machine One Head



Reference NO	2016081201	
<b>Machine Working Video</b>	<a href="https://youtu.be/p7iHYIValec">https://youtu.be/p7iHYIValec</a>	
Item Name	Unit	Value
Power of main motor	KW	11
Polishing efficiency	Sqm per hour	4
Max Polishing size	mm	L*W*H=2500*1200*100
Water consumption	M3/min	0.15-0.3
Machine weight	KG	2000
Overall size	mm	L*W*H=5500*2200*1800